


Contact Post: Sakaeronavigatsia Ltd. Aeronautical Information Service TBILISI/Tbilisi Airport 0198 Tbilisi, Georgia Tel: + 995 32 274 42 37 AFS: UGTBYOYX Email: ais@airnav.ge URL: https://ais.airnav.ge	AIP GEORGIA  SAKAERONAVIGATSI	AIRAC AIP AMENDMENT 01/26 Effective date: 19 FEB 2026 Publication date: 08 JAN 2026
--	---	---

AIRAC AMDT 01/26

1 Significant information and changes:

GEN 0.2 - Records of AIP Amendments

Information updated.

GEN 0.4 - Checklist of AIP pages

Information updated.

UGSB AD 2.24 - Charts related to an aerodrome

Chart IAC-12-NDB updated.

This Amendment is issued together with AIC A 01/26, A 02/26, A 03/26, A 04/26, A 05/26, A 06/26.

2 NOTAM incorporated in this Amendment:

NIL

3 AIP SUP incorporated in this Amendment:

NIL

AMENDED PAGES

To be removed		
GEN		
	GEN 0.2-1	25 DEC 2025
	GEN 0.4-1	25 DEC 2025
	GEN 0.4-2	25 DEC 2025
AD		
	AD 2.UGSB-IAC-12-NDB	07 AUG 2025

To be inserted		
GEN		
	GEN 0.2-1	19 FEB 2026
	GEN 0.4-1	19 FEB 2026
	GEN 0.4-2	19 FEB 2026
AD		
	AD 2.UGSB-IAC-12-NDB	19 FEB 2026

PAGE INTENTIONALLY LEFT BLANK

GEN 0.2 Record of AIP Amendments**AIRAC AIP AMENDMENT**

NR/Year	Publication Date	Effective date	Inserted by
03/25	03 APR 2025	15 MAY 2025	
04/25	29 MAY 2025	10 JUL 2025	
05/25	26 JUN 2025	07 AUG 2025	
06/25	24 JUL 2025	04 SEP 2025	
07/25	21 AUG 2025	02 OCT 2025	
08/25	18 SEP 2025	30 OCT 2025	
09/25	13 NOV 2025	25 DEC 2025	
01/26	08 JAN 2026	19 FEB 2026	

PAGE INTENTIONALLY LEFT BLANK

GEN 0.4 Checklist of AIP pages

Page	Date	Page	Date	Page	Date
Part 1 – General (GEN)		GEN 2.7-9	07 AUG 2025	ENR 1.3-2	07 AUG 2025
GEN 0		GEN 2.7-10	07 AUG 2025	ENR 1.3-3	07 AUG 2025
GEN 0.1-1	07 AUG 2025	GEN 2.7-11	07 AUG 2025	ENR 1.4-1	07 AUG 2025
GEN 0.1-2	07 AUG 2025	GEN 2.7-12	07 AUG 2025	ENR 1.4-2	07 AUG 2025
GEN 0.1-3	07 AUG 2025	GEN 2.7-13	07 AUG 2025	ENR 1.5-1	07 AUG 2025
GEN 0.2-1	19 FEB 2026	GEN 2.7-14	07 AUG 2025	ENR 1.6-1	07 AUG 2025
GEN 0.3-1	04 SEP 2025	GEN 2.7-15	07 AUG 2025	ENR 1.6-2	07 AUG 2025
GEN 0.4-1	19 FEB 2026	GEN 2.7-16	07 AUG 2025	ENR 1.6-3	07 AUG 2025
GEN 0.4-2	19 FEB 2026	GEN 2.7-17	07 AUG 2025	ENR 1.6-5	07 AUG 2025
GEN 0.4-3	25 DEC 2025	GEN 3		ENR 1.6-7	07 AUG 2025
GEN 0.5-1	07 AUG 2025	GEN 3.1-1	07 AUG 2025	ENR 1.6-9	07 AUG 2025
GEN 0.6-1	07 AUG 2025	GEN 3.1-2	25 DEC 2025	ENR 1.6-11	07 AUG 2025
GEN 1		GEN 3.1-3	25 DEC 2025	ENR 1.7-1	07 AUG 2025
GEN 1.1-1	07 AUG 2025	GEN 3.1-4	25 DEC 2025	ENR 1.7-2	07 AUG 2025
GEN 1.1-2	07 AUG 2025	GEN 3.1-5	07 AUG 2025	ENR 1.7-3	07 AUG 2025
GEN 1.2-1	30 OCT 2025	GEN 3.2-1	02 OCT 2025	ENR 1.8-1	07 AUG 2025
GEN 1.2-2	07 AUG 2025	GEN 3.2-2	07 AUG 2025	ENR 1.8-2	07 AUG 2025
GEN 1.2-3	07 AUG 2025	GEN 3.2-3	02 OCT 2025	ENR 1.9-1	07 AUG 2025
GEN 1.3-1	07 AUG 2025	GEN 3.2-4	25 DEC 2025	ENR 1.9-2	07 AUG 2025
GEN 1.3-2	07 AUG 2025	GEN 3.2-5	02 OCT 2025	ENR 1.9-3	07 AUG 2025
GEN 1.4-1	07 AUG 2025	GEN 3.2-6	02 OCT 2025	ENR 1.10-1	07 AUG 2025
GEN 1.4-2	07 AUG 2025	GEN 3.2-7	07 AUG 2025	ENR 1.10-2	07 AUG 2025
GEN 1.5-1	07 AUG 2025	GEN 3.3-1	07 AUG 2025	ENR 1.10-3	07 AUG 2025
GEN 1.6-1	07 AUG 2025	GEN 3.3-2	07 AUG 2025	ENR 1.11-1	07 AUG 2025
GEN 1.6-2	07 AUG 2025	GEN 3.4-1	07 AUG 2025	ENR 1.12-1	07 AUG 2025
GEN 1.7-1	07 AUG 2025	GEN 3.4-2	07 AUG 2025	ENR 1.12-2	07 AUG 2025
GEN 1.7-2	07 AUG 2025	GEN 3.4-3	07 AUG 2025	ENR 1.12-3	07 AUG 2025
GEN 2		GEN 3.4-4	07 AUG 2025	ENR 1.13-1	07 AUG 2025
GEN 2.1-1	07 AUG 2025	GEN 3.4-5	07 AUG 2025	ENR 1.14-1	07 AUG 2025
GEN 2.1-2	07 AUG 2025	GEN 3.4-7	07 AUG 2025	ENR 1.14-2	07 AUG 2025
GEN 2.2-1	07 AUG 2025	GEN 3.5-1	02 OCT 2025	ENR 1.14-3	07 AUG 2025
GEN 2.2-2	07 AUG 2025	GEN 3.5-2	02 OCT 2025	ENR 1.14-4	07 AUG 2025
GEN 2.2-3	07 AUG 2025	GEN 3.5-3	02 OCT 2025	ENR 1.14-5	07 AUG 2025
GEN 2.2-4	07 AUG 2025	GEN 3.5-4	02 OCT 2025	ENR 1.14-6	07 AUG 2025
GEN 2.2-5	07 AUG 2025	GEN 3.5-5	02 OCT 2025	ENR 2	
GEN 2.2-6	30 OCT 2025	GEN 3.5-6	02 OCT 2025	ENR 2.1-1	07 AUG 2025
GEN 2.2-7	30 OCT 2025	GEN 3.5-7	02 OCT 2025	ENR 2.1-2	07 AUG 2025
GEN 2.2-8	30 OCT 2025	GEN 3.6-1	07 AUG 2025	ENR 2.1-3	07 AUG 2025
GEN 2.2-9	30 OCT 2025	GEN 3.6-2	07 AUG 2025	ENR 2.1-4	07 AUG 2025
GEN 2.2-10	30 OCT 2025	GEN 3.7-1	07 AUG 2025	ENR 2.1-5	07 AUG 2025
GEN 2.3-1	07 AUG 2025	GEN 4		ENR 2.1-6	07 AUG 2025
GEN 2.3-2	07 AUG 2025	GEN 4.1-1	07 AUG 2025	ENR 2.1-7	07 AUG 2025
GEN 2.3-3	07 AUG 2025	GEN 4.2-1	07 AUG 2025	ENR 2.1-8	07 AUG 2025
GEN 2.3-4	07 AUG 2025	Part 2 - En-Route (ENR)		ENR 2.1-9	07 AUG 2025
GEN 2.3-5	07 AUG 2025	ENR 0		ENR 2.1-10	04 SEP 2025
GEN 2.3-6	07 AUG 2025	ENR 0.1-1	07 AUG 2025	ENR 2.1-11	07 AUG 2025
GEN 2.4-1	07 AUG 2025	ENR 0.2-1	07 AUG 2025	ENR 2.2-1	07 AUG 2025
GEN 2.5-1	07 AUG 2025	ENR 0.3-1	07 AUG 2025	ENR 3	
GEN 2.6-1	07 AUG 2025	ENR 0.4-1	07 AUG 2025	ENR 3.1-1	07 AUG 2025
GEN 2.6-2	07 AUG 2025	ENR 0.5-1	07 AUG 2025	ENR 3.1-2	07 AUG 2025
GEN 2.6-3	07 AUG 2025	ENR 0.6-1	07 AUG 2025	ENR 3.1-3	07 AUG 2025
GEN 2.7-1	07 AUG 2025	ENR 0.6-2	07 AUG 2025	ENR 3.2-1	07 AUG 2025
GEN 2.7-2	07 AUG 2025	ENR 1		ENR 3.2-2	07 AUG 2025
GEN 2.7-3	07 AUG 2025	ENR 1.1-1	07 AUG 2025	ENR 3.2-3	07 AUG 2025
GEN 2.7-4	07 AUG 2025	ENR 1.2-1	07 AUG 2025	ENR 3.2-4	07 AUG 2025
GEN 2.7-5	07 AUG 2025	ENR 1.2-2	07 AUG 2025	ENR 3.2-5	07 AUG 2025
GEN 2.7-6	07 AUG 2025	ENR 1.2-3	07 AUG 2025	ENR 3.2-6	07 AUG 2025
GEN 2.7-7	07 AUG 2025	ENR 1.3-1	07 AUG 2025	ENR 3.2-7	07 AUG 2025
GEN 2.7-8	07 AUG 2025			ENR 3.2-8	07 AUG 2025
				ENR 3.2-9	07 AUG 2025
				ENR 3.2-10	07 AUG 2025

Page	Date	Page	Date	Page	Date
ENR 3.2-11	07 AUG 2025	AD 2		AD 2.UGKO-IAC-25-LOCz-3	07 AUG 2025
ENR 3.2-12	07 AUG 2025			AD 2.UGKO-IAC-07-VOR	07 AUG 2025
ENR 3.3-1	07 AUG 2025			AD 2.UGKO-IAC-25-VOR	25 DEC 2025
ENR 3.4-1	07 AUG 2025			AD 2.UGKO-VAC	07 AUG 2025
ENR 4				AD 2.UGKO-BIRD	07 AUG 2025
ENR 4.1-1	07 AUG 2025	UGAM - AMBROLAURI		UGMS - MESTIA	
ENR 4.2-1	07 AUG 2025	AD 2.UGAM-1	07 AUG 2025	AD 2.UGMS-1	07 AUG 2025
ENR 4.3-1	07 AUG 2025	AD 2.UGAM-2	07 AUG 2025	AD 2.UGMS-2	07 AUG 2025
ENR 4.4-1	07 AUG 2025	AD 2.UGAM-3	25 DEC 2025	AD 2.UGMS-3	25 DEC 2025
ENR 4.4-2	07 AUG 2025	AD 2.UGAM-4	25 DEC 2025	AD 2.UGMS-4	25 DEC 2025
ENR 4.4-3	07 AUG 2025	AD 2.UGAM-5	07 AUG 2025	AD 2.UGMS-5	07 AUG 2025
ENR 4.4-4	07 AUG 2025	AD 2.UGAM-6	07 AUG 2025	AD 2.UGMS-6	07 AUG 2025
ENR 4.5-1	07 AUG 2025	AD 2.UGAM-7	07 AUG 2025	AD 2.UGMS-7	07 AUG 2025
ENR 5		AD 2.UGAM-8	07 AUG 2025	AD 2.UGMS-8	07 AUG 2025
ENR 5.1-1	07 AUG 2025	AD 2.UGAM-ADC	25 DEC 2025	AD 2.UGMS-ADC	25 DEC 2025
ENR 5.1-2	07 AUG 2025	AD 2.UGAM-VAC	07 AUG 2025	AD 2.UGMS-VAC	07 AUG 2025
ENR 5.1-3	07 AUG 2025	AD 2.UGAM-BIRD	07 AUG 2025	UGSA - NATAKHTARI	
ENR 5.1-4	07 AUG 2025	UGGT - TELAVI		AD 2.UGSA-1	07 AUG 2025
ENR 5.1-5	07 AUG 2025	AD 2.UGGT-1	07 AUG 2025	AD 2.UGSA-2	07 AUG 2025
ENR 5.1-6	07 AUG 2025	AD 2.UGGT-2	07 AUG 2025	AD 2.UGSA-3	07 AUG 2025
ENR 5.2-1	07 AUG 2025	AD 2.UGGT-3	07 AUG 2025	AD 2.UGSA-4	07 AUG 2025
ENR 5.3-1	07 AUG 2025	AD 2.UGGT-4	07 AUG 2025	AD 2.UGSA-5	07 AUG 2025
ENR 5.4-1	25 DEC 2025	AD 2.UGGT-5	07 AUG 2025	AD 2.UGSA-6	07 AUG 2025
ENR 5.5-1	07 AUG 2025	AD 2.UGGT-6	07 AUG 2025	AD 2.UGSA-7	07 AUG 2025
ENR 5.5-2	07 AUG 2025	AD 2.UGGT-7	07 AUG 2025	AD 2.UGSA-8	07 AUG 2025
ENR 5.6-1	07 AUG 2025	AD 2.UGGT-8	07 AUG 2025	AD 2.UGSA-ADC	07 AUG 2025
ENR 5.6-2	07 AUG 2025	AD 2.UGGT-ADC	07 AUG 2025	AD 2.UGSA-VAC	07 AUG 2025
ENR 5.6-3	07 AUG 2025	AD 2.UGGT-VAC	07 AUG 2025	UGSB - BATUMI	
ENR 6		UGKO - KUTAISSI/KOPITNARI		AD 2.UGSB-1	30 OCT 2025
ENR 6.1-1	07 AUG 2025	AD 2.UGKO-1	07 AUG 2025	AD 2.UGSB-2	07 AUG 2025
ENR 6-3	07 AUG 2025	AD 2.UGKO-2	07 AUG 2025	AD 2.UGSB-3	25 DEC 2025
ENR 6-5	07 AUG 2025	AD 2.UGKO-3	25 DEC 2025	AD 2.UGSB-4	07 AUG 2025
ENR 6-7	07 AUG 2025	AD 2.UGKO-4	25 DEC 2025	AD 2.UGSB-5	07 AUG 2025
ENR 6-9	07 AUG 2025	AD 2.UGKO-5	25 DEC 2025	AD 2.UGSB-6	07 AUG 2025
ENR 6-11	07 AUG 2025	AD 2.UGKO-6	25 DEC 2025	AD 2.UGSB-7	07 AUG 2025
ENR 6-13-1	04 SEP 2025	AD 2.UGKO-7	07 AUG 2025	AD 2.UGSB-8	30 OCT 2025
ENR 6-13-3	07 AUG 2025	AD 2.UGKO-8	07 AUG 2025	AD 2.UGSB-9	07 AUG 2025
ENR 6-13-5	07 AUG 2025	AD 2.UGKO-9	07 AUG 2025	AD 2.UGSB-10	07 AUG 2025
ENR 6-15-1	25 DEC 2025	AD 2.UGKO-10	07 AUG 2025	AD 2.UGSB-11	07 AUG 2025
ENR 6-15-3	07 AUG 2025	AD 2.UGKO-11	07 AUG 2025	AD 2.UGSB-12	25 DEC 2025
ENR 6-15-5	07 AUG 2025	AD 2.UGKO-12	07 AUG 2025	AD 2.UGSB-13	25 DEC 2025
Part 3 — Aerodromes (AD)		AD 2.UGKO-13	07 AUG 2025	AD 2.UGSB-14	25 DEC 2025
AD 0		AD 2.UGKO-14	07 AUG 2025	AD 2.UGSB-15	25 DEC 2025
AD 0.1-1	07 AUG 2025	AD 2.UGKO-ADC	25 DEC 2025	AD 2.UGSB-16	25 DEC 2025
AD 0.2-1	07 AUG 2025	AD 2.UGKO-ARC	07 AUG 2025	AD 2.UGSB-ADC	25 DEC 2025
AD 0.3-1	07 AUG 2025	AD 2.UGKO-SID-07-1	07 AUG 2025	AD 2.UGSB-ARC	07 AUG 2025
AD 0.4-1	07 AUG 2025	AD 2.UGKO-SID-07-3	07 AUG 2025	AD 2.UGSB-AOC-A	07 AUG 2025
AD 0.5-1	07 AUG 2025	AD 2.UGKO-SID-RNAV-07-1	07 AUG 2025	AD 2.UGSB-SID-RNAV-30-1	07 AUG 2025
AD 0.6-1	07 AUG 2025	AD 2.UGKO-SID-RNAV-07-3	07 AUG 2025	AD 2.UGSB-SID-RNAV-30-3	07 AUG 2025
AD 0.6-2	07 AUG 2025	AD 2.UGKO-SID-RNAV-25-1	07 AUG 2025	AD 2.UGSB-SID-RNAV-30-5	07 AUG 2025
AD 0.6-3	07 AUG 2025	AD 2.UGKO-SID-RNAV-25-3	07 AUG 2025	AD 2.UGSB-STAR-RNAV-12-1	07 AUG 2025
AD 0.6-4	25 DEC 2025	AD 2.UGKO-SID-RNAV-25-3	07 AUG 2025	AD 2.UGSB-STAR-RNAV-12-3	07 AUG 2025
AD 1		AD 2.UGKO-ATCSMAC-1	07 AUG 2025	AD 2.UGSB-ATCSMAC-1	07 AUG 2025
AD 1.1-1	07 AUG 2025	AD 2.UGKO-ATCSMAC-3	07 AUG 2025	AD 2.UGSB-ATCSMAC-3	07 AUG 2025
AD 1.1-2	07 AUG 2025	AD 2.UGKO-IAC-07-ILSy	07 AUG 2025	AD 2.UGSB-IAC-12-ILSy	07 AUG 2025
AD 1.2-1	07 AUG 2025	AD 2.UGKO-IAC-07-ILSsz-1	07 AUG 2025	AD 2.UGSB-IAC-12-ILSsz-1	07 AUG 2025
AD 1.2-2	07 AUG 2025	AD 2.UGKO-IAC-07-ILSsz-3	07 AUG 2025	AD 2.UGSB-IAC-12-ILSsz-3	07 AUG 2025
AD 1.3-1	07 AUG 2025	AD 2.UGKO-IAC-07-LOCy	07 AUG 2025	AD 2.UGSB-IAC-12-LOCy	07 AUG 2025
AD 1.4-1	07 AUG 2025	AD 2.UGKO-IAC-07-LOCz-1	07 AUG 2025	AD 2.UGSB-IAC-12-LOCz-1	07 AUG 2025
AD 1.5-1	30 OCT 2025	AD 2.UGKO-IAC-07-LOCz-3	07 AUG 2025	AD 2.UGSB-IAC-12-LOCz-3	07 AUG 2025
		AD 2.UGKO-IAC-25-ILSy	25 DEC 2025	AD 2.UGSB-IAC-12-LOCz-3	07 AUG 2025
		AD 2.UGKO-IAC-25-ILSsz-1	07 AUG 2025	AD 2.UGSB-IAC-12-NDB	19 FEB 2026
		AD 2.UGKO-IAC-25-ILSsz-3	07 AUG 2025	AD 2.UGSB-VAC	07 AUG 2025
		AD 2.UGKO-IAC-25-LOCy	25 DEC 2025	AD 2.UGSB-BIRD	07 AUG 2025
		AD 2.UGKO-IAC-25-LOCz-1	07 AUG 2025	UGTB - TBILISI/TBILISI	

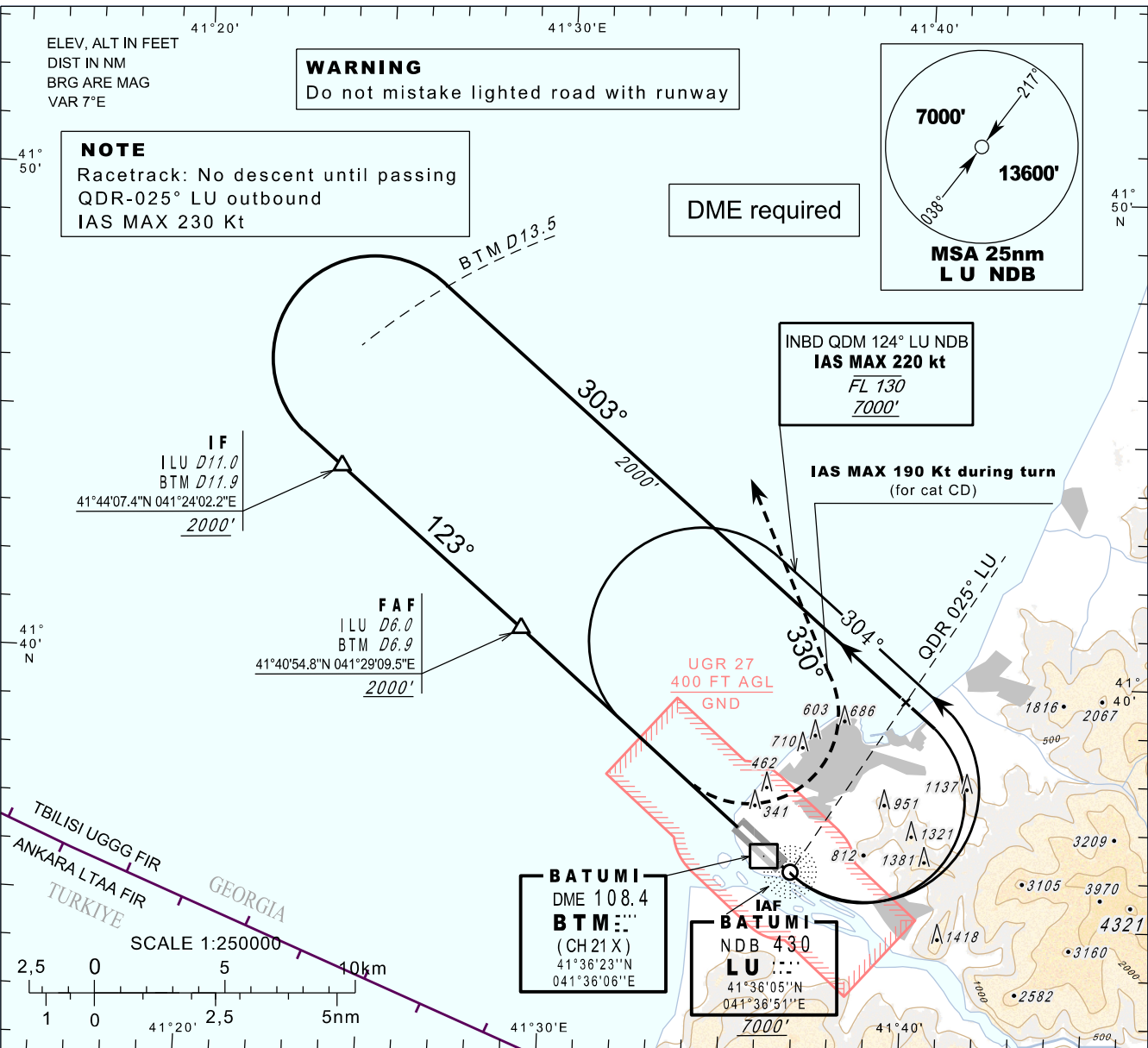
**INSTRUMENT
APPROACH
CHART - ICAO**

AERODROME ELEV 37'
HEIGHTS RELATED TO
THR RWY 12 - ELEV 17'

APP 124.425
TWR 118.600

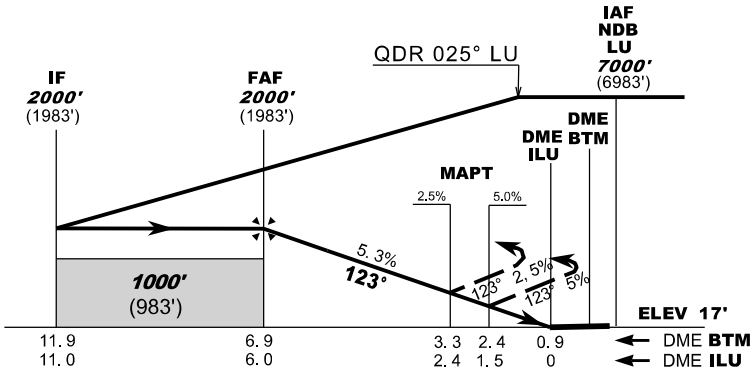
**BATUMI (UGSB)
NDB
RWY 12**

TRANSITION ALT 7000'



MISSED APPROACH

Climb on QDM 123° NDB LU. At 900' turn left heading 330° climbing to 3000' and follow ATC instructions.
IAS MAX 190 KT until turn is completed (for cat CD).



Straight-in Approach				
Missed APCH climb gradient	OCA (H)			
	A	B	C	D
2.5%	850 (840)			
5.0%	560 (550)			

DME BTM NM	7	6	5	4	3	2
DME ILU NM	6.1	5.1	4.1	3.1	2.1	1.1
ALT (HGT) ft	2032 (2015)	1712 (1695)	1393 (1376)	1073 (1056)	753 (736)	433 (416)

PAGE INTENTIONALLY LEFT BLANK